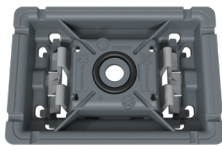


# PVX Minimount®

Installation manual mounting rail

Article number: PVX18052021

## Included



### Step 1



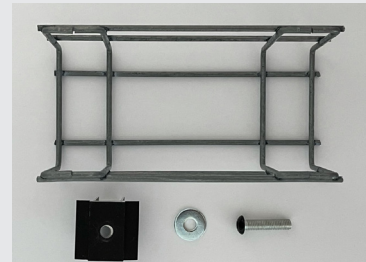
PVX Minimount PVX18052021 Ø8,5mm  
36 x PVX Minimount  
36 x Mesh tray clip

### Step 2



PVX Minimount bottom, O-ring, mesh tray clip

### Step 3



Required: panel clamp, metal washer, bolt, mesh tray  
60 – 300mm

### Step 4



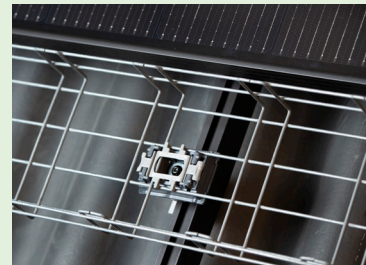
Attach the PVX Minimount with bolt + metal washer on a panel clamp and then install it on the mounting rail, tightening torque: 4NM

### Step 5



Tilt the mesh tray and place it in the PVX Minimount. The multilock system allows the mesh tray to hang securely for hands-free assembly.

### Step 6



Place the mesh tray clip and push it on: Click!