

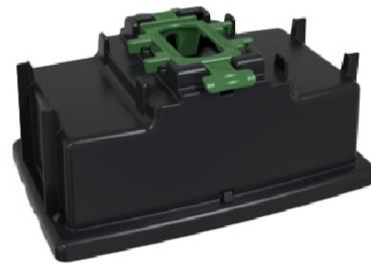


PVX Multimount[®]
THE NEW STANDARD IN CABLE MANAGEMENT

Compatibility overview - Mesh tray



PVX Multimount



PVX Singlemount



PVX Minimount

THE NEW STANDARD IN CABLE MANAGEMENT



PVX Multimount compatibility overview: Mesh tray

PVX Multimount			
Cablofil Fasclic+ art:	Mesh tray specs H x W (mm)	Width wire mounting	Length wire mounting
CM200066	54 x 50	Yes	No
CM200076	54 x 100	Yes	Yes
CM200086	54 x 150	Yes: Z-shape mounting	Yes: Z-shape mounting
CM200096	54 x 200	Yes	Yes
CM200106	54 x 300	Yes	Yes
CM200206	54 x 400 (2 x PVX Multimount)	Yes	Yes
CM200306	54 x 500 (2 x PVX Multimount)	Yes	Yes
CM200406	54 x 600 (2 x PVX Multimount)	Yes	Yes
Supporting distance	Max: 2,5 meter		
PVX Singlemount			
Cablofil Fasclic+ art:	Mesh tray specs H x W (mm)	Width wire mounting	Length wire mounting
CM200066	54 x 50	Yes	No
CM200076	54 x 100	Yes	Yes
CM200086	54 x 150	Yes: Z-shape mounting	Yes: Z-shape mounting
CM200096	54 x 200	Yes	Yes
CM200106	54 x 300	Yes	Yes
CM200206	54 x 400 (2 x PVX Singlemount)	Yes	Yes
CM200306	54 x 500 (2 x PVX Singlemount)	Yes	Yes
CM200406	54 x 600 (2 x PVX Singlemount)	Yes	Yes
Supporting distance	Max: 2,5 meter		
PVX Minimount			
Cablofil Fasclic+ art:	Mesh tray specs H x W (mm)	Width wire mounting	Length wire mounting
CM200066	54 x 50	Yes	No
CM200076	54 x 100	Yes	Yes
CM200086	54 x 150	No	No
CM200096	54 x 200	Yes	Yes
Supporting distance	See installation manual PVX Minimount: Slope roof		



PVX Multimount
THE NEW STANDARD IN CABLE MANAGEMENT

PVX Multimount®

Buitenbaan 70, NL-4206 VT Gorinchem, +31 (0)6-40235633

info@pvxmultimount.com | www.pvxmultimount.com

PVX Multimount compatibility overview: Mesh tray

<u>PVX Multimount</u>			
Niedax art:	Mesh tray specs H x W (mm)	Width wire mounting	Lenght wire mounting
MTC 54.050 F	54 x 50	Yes	No
MTC 54.100 F	54 x 100	Yes	Yes
MTC 54.150 F	54 x 150	Yes: Z-shape mounting	Yes: Z-shape mounting
MTC 54.200 F	54 x 200	Yes	Yes
MTC 54.300 F	54 x 300	Yes	Yes
MTC 54.400 F	54 x 400 (2 x PVX Multimount)	Yes	Yes
MTC 54.500 F	54 x 500 (2 x PVX Multimount)	Yes	Yes
MTC 54.600 F	54 x 600 (2 x PVX Multimount)	Yes	Yes
Supporting distance	Max: 2,5 meter		
<u>PVX Singlemount</u>			
Niedax art:	Mesh tray specs H x W (mm)	Width wire mounting	Lenght wire mounting
MTC 54.050 F	54 x 50	Yes	No
MTC 54.100 F	54 x 100	Yes	Yes
MTC 54.150 F	54 x 150	Yes: Z-shape mounting	Yes: Z-shape mounting
MTC 54.200 F	54 x 200	Yes	Yes
MTC 54.300 F	54 x 300	Yes	Yes
MTC 54.400 F	54 x 400 (2 x PVX Singlemount)	Yes	Yes
MTC 54.500 F	54 x 500 (2 x PVX Singlemount)	Yes	Yes
MTC 54.600 F	54 x 600 (2 x PVX Singlemount)	Yes	Yes
Supporting distance	Max: 2,5 meter		
<u>PVX Minimount</u>			
Niedax art:	Mesh tray specs H x W (mm)	Width wire mounting	Lenght wire mounting
MTC 54.050 F	54 x 50	Yes	No
MTC 54.100 F	54 x 100	Yes	Yes
MTC 54.150 F	54 x 150	No	No
MTC 54.200 F	54 x 200	Yes	Yes
Supporting distance	See installation manual PVX Minimount: Slope roof		



PVX Multimount compatibility overview: Mesh tray

<u>PVX Multimount</u>			
Trayco Light art:	Mesh tray specs H x W (mm)	Width wire mounting	Lenght wire mounting
MTL60-050-3UG	60 x 50	No	No
MTL60-100-3UG	60 x 100	Yes	Yes
MTL60-150-3UG	60 x 150	Yes: Z-shape mounting	Yes: Z-shape mounting
MTL60-200-3UG	60 x 200	Yes	Yes
MTL60-300-3UG	60 x 300	Yes	Yes
MTL60-400-3UG	60 x 400 (2 x PVX Multimount)	Yes	Yes
MTL60-500-3UG	60 x 500 (2 x PVX Multimount)	Yes	Yes
MTL60-600-3UG	60 x 600 (2 x PVX Multimount)	Yes	Yes
Supporting distance	Max: 1.5 mtr		
<u>PVX Singlemount</u>			
Trayco Light art:	Mesh tray specs H x W (mm)	Width wire mounting	Lenght wire mounting
MTL60-050-3UG	60 x 50	No	No
MTL60-100-3UG	60 x 100	Yes	Yes
MTL60-150-3UG	60 x 150	Yes: Z-shape mounting	Yes: Z-shape mounting
MTL60-200-3UG	60 x 200	Yes	Yes
MTL60-300-3UG	60 x 300	Yes	Yes
MTL60-400-3UG	60 x 400 (2 x PVX Singlemount)	Yes	Yes
MTL60-500-3UG	60 x 500 (2 x PVX Singlemount)	Yes	Yes
MTL60-600-3UG	60 x (2 x PVX Singlemount)	Yes	Yes
Supporting distance	Max: 1.5 mtr		
<u>PVX Minimount</u>			
Trayco Light art:	Mesh tray specs H x W (mm)	Width wire mounting	Lenght wire mounting
MTL60-050-3UG	60 x 50	No	No
MTL60-100-3UG	60 x 100	Yes	Yes
MTL60-150-3UG	60 x 150	No	No
MTL60-200-3UG	60 x 200	Yes	Yes
MTL60-300-3UG	60 x 300	Yes	Yes
Supporting distance	See the installation manual PVX Minimount: Slope roof		



PVX Multimount compatibility overview: Mesh tray

PVX Multimount			
Atkore Vergokan art:	Mesh tray specs H x W (mm)	Width wire mounting	Length wire mounting
ZAVFUL60.050	60 x 50	No	No
ZAVFUL60.100	60 x 100	Yes	Yes
ZAVFUL60.150	60 x 146	Yes: Z-shape mounting	Yes: Z-shape mounting
ZAVFUL60.200	60 x 197	Yes	Yes
ZAVFUL60.300	60 x 297	Yes	Yes
ZAVFU60.400	60 x 400 (2 x PVX Multimount)	Yes	Yes
ZAVFU60.500	60 x 500 (2 x PVX Multimount)	Yes	Yes
ZAVFU60.600	60 x 600 (2 x PVX Multimount)	Yes	Yes
Supporting distance	Max: 2 meter		
PVX Singlemount			
Atkore Vergokan art:	Mesh tray specs H x W (mm)	Width wire mounting	Length wire mounting
ZAVFUL60.050	60 x 50	No	No
ZAVFUL60.100	60 x 100	Yes	Yes
ZAVFUL60.150	60 x 146	Yes: Z-shape mounting	Yes: Z-shape mounting
ZAVFUL60.200	60 x 197	Yes	Yes
ZAVFUL60.300	60 x 297	Yes	Yes
ZAVFU60.400	60 x 400 (2 x PVX Singlemount)	Yes	Yes
ZAVFU60.500	60 x 500 (2 x PVX Singlemount)	Yes	Yes
ZAVFU60.600	60 x 600 (2 x PVX Singlemount)	Yes	Yes
Supporting distance	Max: 2 meter		
PVX Minimount			
Atkore Vergokan art:	Mesh tray specs H x W (mm)	Width wire mounting	Length wire mounting
ZAVFUL60.050	60 x 50	No	No
ZAVFUL60.100	60 x 96	Yes	Yes
ZAVFUL60.150	60 x 146	No	No
ZAVFUL60.200	60 x 197	Yes	Yes
Supporting distance	See installation manual PVX Minimount: Slope roof		

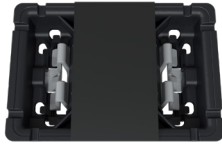


PVX Multimount®

Installation manual pitched roof

Article number: PVX16032021

Included

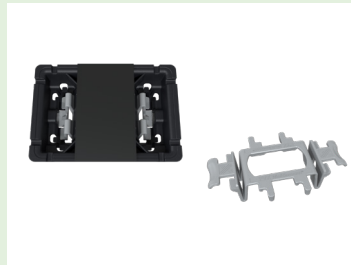


Step 1



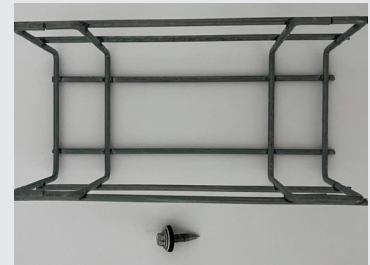
PVX Minimount PVX16032021 Ø6,3mm
36 x PVX Minimount
36 x Mesh tray clip

Step 2



PVX Minimount bottom, EPDM rubber,
mesh tray clip

Step 3



Required: screw + metal washer
including EPDM, bolt, mesh tray
60 – 200mm wide

Step 4



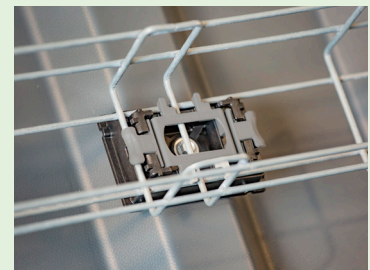
Install the PVX Minimount with the
screw, metal washer + EPDM on the
substrate with a maximum tightening
torque of: 4NM.

Step 5



Tilt the mesh tray and place it in the
PVX Minimount. The multilock system
allows the wire tray to hang securely for
hands-free assembly.

Step 6

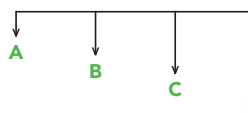


Place the mesh tray clip and push it on:
Click!

Support distance from the roof ridge



horizontal



A = 0 - 3 mtr = 1,5 mtr
B = 4 - 6 mtr = 1 mtr
C = 7 - 15 mtr = 0,5 mtr
D = 15 + = 0,25 mtr



vertical

= 0,8 - 1 mtr



PVX Multimount®
THE NEW STANDARD IN CABLE MANAGEMENT

PVX Multimount® is active in the following countries:



We distribute our mounting systems through our network of distributors.
Visit <https://pvxmultimount.com/en/dealers/> for more information.

