



PVX Multimount[®]
THE NEW STANDARD IN CABLE MANAGEMENT

Compatibility overview - Mesh tray



PVX Multimount



PVX Singlemount



PVX Minimount

THE NEW STANDARD IN CABLE MANAGEMENT



PVX Multimount compatibility overview: Mesh tray

| PVX Multimount | | | |
|-------------------------------|--|----------------------------|-----------------------------|
| Cablofil Fasclic+ art: | Mesh tray specs H x W (mm) | Width wire mounting | Length wire mounting |
| CM200066 | 54 x 50 | Yes | No |
| CM200076 | 54 x 100 | Yes | Yes |
| CM200086 | 54 x 150 | Yes: Z-shape mounting | Yes: Z-shape mounting |
| CM200096 | 54 x 200 | Yes | Yes |
| CM200106 | 54 x 300 | Yes | Yes |
| CM200206 | 54 x 400 (2 x PVX Multimount) | Yes | Yes |
| CM200306 | 54 x 500 (2 x PVX Multimount) | Yes | Yes |
| CM200406 | 54 x 600 (2 x PVX Multimount) | Yes | Yes |
| Supporting distance | Max: 2,5 meter | | |
| PVX Singlemount | | | |
| Cablofil Fasclic+ art: | Mesh tray specs H x W (mm) | Width wire mounting | Length wire mounting |
| CM200066 | 54 x 50 | Yes | No |
| CM200076 | 54 x 100 | Yes | Yes |
| CM200086 | 54 x 150 | Yes: Z-shape mounting | Yes: Z-shape mounting |
| CM200096 | 54 x 200 | Yes | Yes |
| CM200106 | 54 x 300 | Yes | Yes |
| CM200206 | 54 x 400 (2 x PVX Singlemount) | Yes | Yes |
| CM200306 | 54 x 500 (2 x PVX Singlemount) | Yes | Yes |
| CM200406 | 54 x 600 (2 x PVX Singlemount) | Yes | Yes |
| Supporting distance | Max: 2,5 meter | | |
| PVX Minimount | | | |
| Cablofil Fasclic+ art: | Mesh tray specs H x W (mm) | Width wire mounting | Length wire mounting |
| CM200066 | 54 x 50 | Yes | No |
| CM200076 | 54 x 100 | Yes | Yes |
| CM200086 | 54 x 150 | No | No |
| CM200096 | 54 x 200 | Yes | Yes |
| Supporting distance | See installation manual PVX Minimount: Slope roof | | |



PVX Multimount
THE NEW STANDARD IN CABLE MANAGEMENT

PVX Multimount®

Buitenbaan 70, NL-4206 VT Gorinchem, +31 (0)6-40235633

info@pvxmultimount.com | www.pvxmultimount.com



PVX Multimount compatibility overview : Mesh tray

| <u>PVX Multimount</u> | | | |
|-------------------------------|--|-----------------------|-----------------------|
| Niedax art: | Mesh tray specs H x W (mm) | Width wire mounting | Lenght wire mounting |
| MTC 54.050 F | 54 x 50 | Yes | No |
| MTC 54.100 F | 54 x 100 | Yes | Yes |
| MTC 54.150 F | 54 x 150 | Yes: Z-shape mounting | Yes: Z-shape mounting |
| MTC 54.200 F | 54 x 200 | Yes | Yes |
| MTC 54.300 F | 54 x 300 | Yes | Yes |
| MTC 54.400 F | 54 x 400 (2 x PVX Multimount) | Yes | Yes |
| MTC 54.500 F | 54 x 500 (2 x PVX Multimount) | Yes | Yes |
| MTC 54.600 F | 54 x 600 (2 x PVX Multimount) | Yes | Yes |
| Supporting distance | Max: 2,5 meter | | |
| <u>PVX Singlemount</u> | | | |
| Niedax art: | Mesh tray specs H x W (mm) | Width wire mounting | Lenght wire mounting |
| MTC 54.050 F | 54 x 50 | Yes | No |
| MTC 54.100 F | 54 x 100 | Yes | Yes |
| MTC 54.150 F | 54 x 150 | Yes: Z-shape mounting | Yes: Z-shape mounting |
| MTC 54.200 F | 54 x 200 | Yes | Yes |
| MTC 54.300 F | 54 x 300 | Yes | Yes |
| MTC 54.400 F | 54 x 400 (2 x PVX Singlemount) | Yes | Yes |
| MTC 54.500 F | 54 x 500 (2 x PVX Singlemount) | Yes | Yes |
| MTC 54.600 F | 54 x 600 (2 x PVX Singlemount) | Yes | Yes |
| Supporting distance | Max: 2,5 meter | | |
| <u>PVX Minimount</u> | | | |
| Niedax art: | Mesh tray specs H x W (mm) | Width wire mounting | Lenght wire mounting |
| MTC 54.050 F | 54 x 50 | Yes | No |
| MTC 54.100 F | 54 x 100 | Yes | Yes |
| MTC 54.150 F | 54 x 150 | No | No |
| MTC 54.200 F | 54 x 200 | Yes | Yes |
| Supporting distance | See installation manual PVX Minimount: Slope roof | | |



PVX Multimount®
THE NEW STANDARD IN CABLE MANAGEMENT

PVX Multimount®

Buitenbaan 70, NL-4206 VT Gorinchem, +31 (0)6-40235633

info@pvxmultimount.com | www.pvxmultimount.com

PVX Multimount compatibility overview : Mesh tray

| <u>PVX Multimount</u> | | | |
|------------------------|---|------------------------|------------------------|
| OBO product code: | Mesh tray dimensions W x H (mm) | Width wire mounting | Length wire mounting |
| GRM 55 x 50 | 55 x 50 | Yes | Yes |
| GRM 100 x 50 | 100 x 50 | Yes | Yes |
| GRM 150 x 50 | 150 x 50 | Yes: Z- shape mounting | Yes: Z- shape mounting |
| GRM 200 x 50 | 200 x 50 | Yes | Yes |
| GRM 300 x 50 | 300 x 50 | Yes | Yes |
| GRM 400 x 50 | 400 x 50 (2 x PVX Multimount) | Yes | Yes |
| Supporting distance | Max: 2 meter | | |
| <u>PVX Singlemount</u> | | | |
| OBO product code: | Mesh tray dimensions W x H (mm) | Width wire mounting | Length wire mounting |
| GRM 55 x 50 | 55 x 50 | Yes | Yes |
| GRM 100 x 50 | 100 x 50 | Yes | Yes |
| GRM 150 x 50 | 150 x 50 | Yes: Z- shape mounting | Yes: Z- shape mounting |
| GRM 200 x 50 | 200 x 50 | Yes | Yes |
| GRM 300 x 50 | 300 x 50 | Yes | Yes |
| GRM 400 x 50 | 400 x 50 (2 x PVX Singlemount) | Yes | Yes |
| Supporting distance | Max: 2 meter | | |
| <u>PVX Minimount</u> | | | |
| OBO product code: | Mesh tray dimensions W x H (mm) | Width wire mounting | Length wire mounting |
| GRM 55 x 50 | 55 x 50 | Yes | Yes |
| GRM 100 x 50 | 100 x 50 | Yes | Yes |
| GRM 150 x 50 | 150 x 50 | No | No |
| GRM 200 x 50 | 200 x 50 | Yes | Yes |
| GRM 300 x 50 | 300 x 50 | Yes | Yes |
| Supporting distance | See installation manuel PVX Minimount: slope roof. | | |



PVX Multimount compatibility overview: Mesh tray

| PVX Multimount | | | |
|------------------------------|--|-----------------------|-----------------------|
| Stago Performa product code: | Mesh tray dimensions H x W (mm) | Width wire mounting | Length wire mounting |
| CSU4518206 | 60 x 60 | Yes | Yes |
| CSU4518210 | 70 x 100 | Yes | Yes |
| CSU4518215 | 70 x 150 | Yes: Z-shape mounting | Yes: Z-shape mounting |
| CSU4518220 | 70 x 200 | Yes | Yes |
| CSU4518230 | 70 x 300 | Yes | Yes |
| CSU4518240 | 70 x 400 (2 x PVX Multimount) | Yes | Yes |
| CSU4518250 | 70 x 500 (2 x PVX Multimount) | Yes | Yes |
| CSU4518260 | 70 x 600 (2 x PVX Multimount) | Yes | Yes |
| Supporting distance | Max: 1,5 meter | | |
| PVX Singlemount | | | |
| Stago Performa product code: | Mesh tray dimensions H x W (mm) | Width wire mounting | Length wire mounting |
| CSU4518206 | 60 x 60 | Yes | Yes |
| CSU4518210 | 70 x 100 | Yes | Yes |
| CSU4518215 | 70 x 150 | Yes: Z-shape mounting | Yes: Z-shape mounting |
| CSU4518220 | 70 x 200 | Yes | Yes |
| CSU4518230 | 70 x 300 | Yes | Yes |
| CSU4518240 | 70 x 400 (2 x PVX Multimount) | Yes | Yes |
| CSU4518250 | 70 x 500 (2 x PVX Multimount) | Yes | Yes |
| CSU4518260 | 70 x 600 (2 x PVX Multimount) | Yes | Yes |
| Supporting distance | Max: 1,5 meter | | |
| PVX Minimount | | | |
| Stago Performa product code: | Mesh tray dimensions H x W (mm) | Width wire mounting | Length wire mounting |
| CSU4518206 | 60 x 60 | No | No |
| CSU4518210 | 70 x 100 | Yes | Yes |
| CSU4518215 | 70 x 150 | No | No |
| CSU4518220 | 70 x 200 | Yes | Yes |
| CSU4518230 | 70 x 300 | Yes | Yes |
| Supporting distance | See installation manual PVX Minimount: Slope roof | | |



PVX Multimount compatibility overview : Mesh tray

| PVX Multimount | | | |
|------------------------|--|-----------------------|-----------------------|
| Valdinox product code: | Mesh tray dimensions H x W (mm) | Width wire mounting | Length wire mounting |
| EC60.060HDG | 60 x 60 | No | No |
| EC60.100HDG | 60 x 100 | Yes | Yes |
| EC60.150HDG | 60 x 150 | Yes: Z-shape mounting | Yes: Z-shape mounting |
| EC60.200HDG | 60 x 200 | Yes | Yes |
| EC60.300HDG | 60 x 300 | Yes | Yes |
| EC60.400HDG | 60 x 400 (2 x PVX Multimount) | Yes | Yes |
| EC60.500HDG | 60 x 500 (2 x PVX Multimount) | Yes | Yes |
| EC60.600HDG | 60 x 600 (2 x PVX Multimount) | Yes | Yes |
| Supporting distance | Max: 2 meter | | |
| PVX Singlemount | | | |
| Valdinox product code: | Mesh tray dimensions H x W (mm) | Width wire mounting | Length wire mounting |
| EC60.060HDG | 60 x 60 | No | No |
| EC60.100HDG | 60 x 100 | Yes | Yes |
| EC60.150HDG | 60 x 150 | Yes: Z-shape mounting | Yes: Z-shape mounting |
| EC60.200HDG | 60 x 200 | Yes | Yes |
| EC60.300HDG | 60 x 300 | Yes | Yes |
| EC60.400HDG | 60 x 400 (2 x PVX Singlemount) | Yes | Yes |
| EC60.500HDG | 60 x 500 (2 x PVX Multimount) | Yes | Yes |
| EC60.600HDG | 60 x 600 (2 x PVX Multimount) | Yes | Yes |
| Supporting distance | Max: 2 meter | | |
| PVX Minimount | | | |
| Valdinox product code: | Mesh tray dimensions H x W (mm) | Width wire mounting | Length wire mounting |
| EC60.060HDG | 60 x 60 | No | No |
| EC60.100HDG | 60 x 100 | Yes | Yes |
| EC60.150HDG | 60 x 150 | No | No |
| EC60.200HDG | 60 x 200 | Yes | Yes |
| EC60.300HDG | 60 x 300 | Yes | Yes |
| Supporting distance | See installation manual PVX Minimount: Slope roof | | |



PVX Multimount compatibility overview : Mesh tray

| PVX Multimount | | | |
|------------------------|--|-----------------------|-----------------------|
| Trayco Light art: | Mesh tray specs H x W (mm) | Width wire mounting | Lenght wire mounting |
| MTL60-050-3UG | 60 x 50 | No | No |
| MTL60-100-3UG | 60 x 100 | Yes | Yes |
| MTL60-150-3UG | 60 x 150 | Yes: Z-shape mounting | Yes: Z-shape mounting |
| MTL60-200-3UG | 60 x 200 | Yes | Yes |
| MTL60-300-3UG | 60 x 300 | Yes | Yes |
| MTL60-400-3UG | 60 x 400 (2 x PVX Multimount) | Yes | Yes |
| MTL60-500-3UG | 60 x 500 (2 x PVX Multimount) | Yes | Yes |
| MTL60-600-3UG | 60 x 600 (2 x PVX Multimount) | Yes | Yes |
| Supporting distance | Max: 1.5 mtr | | |
| PVX Singlemount | | | |
| Trayco Light art: | Mesh tray specs H x W (mm) | Width wire mounting | Lenght wire mounting |
| MTL60-050-3UG | 60 x 50 | No | No |
| MTL60-100-3UG | 60 x 100 | Yes | Yes |
| MTL60-150-3UG | 60 x 150 | Yes: Z-shape mounting | Yes: Z-shape mounting |
| MTL60-200-3UG | 60 x 200 | Yes | Yes |
| MTL60-300-3UG | 60 x 300 | Yes | Yes |
| MTL60-400-3UG | 60 x 400 (2 x PVX Singlemount) | Yes | Yes |
| MTL60-500-3UG | 60 x 500 (2 x PVX Singlemount) | Yes | Yes |
| MTL60-600-3UG | 60 x (2 x PVX Singlemount) | Yes | Yes |
| Supporting distance | Max: 1.5 mtr | | |
| PVX Minimount | | | |
| Trayco Light art: | Mesh tray specs H x W (mm) | Width wire mounting | Lenght wire mounting |
| MTL60-050-3UG | 60 x 50 | No | No |
| MTL60-100-3UG | 60 x 100 | Yes | Yes |
| MTL60-150-3UG | 60 x 150 | No | No |
| MTL60-200-3UG | 60 x 200 | Yes | Yes |
| MTL60-300-3UG | 60 x 300 | Yes | Yes |
| Supporting distance | See the installation manual PVX Minimount: Slope roof | | |



PVX Multimount compatibility overview: Mesh tray

| <u>PVX Multimount</u> | | | |
|-------------------------------|--|-----------------------|-----------------------|
| Atkore Vergokan art: | Mesh tray specs H x W (mm) | Width wire mounting | Length wire mounting |
| ZAVFUL60.050 | 60 x 50 | No | No |
| ZAVFUL60.100 | 60 x 100 | Yes | Yes |
| ZAVFUL60.150 | 60 x 146 | Yes: Z-shape mounting | Yes: Z-shape mounting |
| ZAVFUL60.200 | 60 x 197 | Yes | Yes |
| ZAVFUL60.300 | 60 x 297 | Yes | Yes |
| ZAVFU60.400 | 60 x 400 (2 x PVX Multimount) | Yes | Yes |
| ZAVFU60.500 | 60 x 500 (2 x PVX Multimount) | Yes | Yes |
| ZAVFU60.600 | 60 x 600 (2 x PVX Multimount) | Yes | Yes |
| Supporting distance | Max: 2 meter | | |
| <u>PVX Singlemount</u> | | | |
| Atkore Vergokan art: | Mesh tray specs H x W (mm) | Width wire mounting | Length wire mounting |
| ZAVFUL60.050 | 60 x 50 | No | No |
| ZAVFUL60.100 | 60 x 100 | Yes | Yes |
| ZAVFUL60.150 | 60 x 146 | Yes: Z-shape mounting | Yes: Z-shape mounting |
| ZAVFUL60.200 | 60 x 197 | Yes | Yes |
| ZAVFUL60.300 | 60 x 297 | Yes | Yes |
| ZAVFU60.400 | 60 x 400 (2 x PVX Singlemount) | Yes | Yes |
| ZAVFU60.500 | 60 x 500 (2 x PVX Singlemount) | Yes | Yes |
| ZAVFU60.600 | 60 x 600 (2 x PVX Singlemount) | Yes | Yes |
| Supporting distance | Max: 2 meter | | |
| <u>PVX Minimount</u> | | | |
| Atkore Vergokan art: | Mesh tray specs H x W (mm) | Width wire mounting | Length wire mounting |
| ZAVFUL60.050 | 60 x 50 | No | No |
| ZAVFUL60.100 | 60 x 96 | Yes | Yes |
| ZAVFUL60.150 | 60 x 146 | No | No |
| ZAVFUL60.200 | 60 x 197 | Yes | Yes |
| Supporting distance | See installation manual PVX Minimount: Slope roof | | |

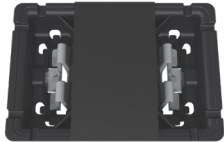


PVX Minimount®

Installation manual pitched roof

Article number: PVX16032021

Included

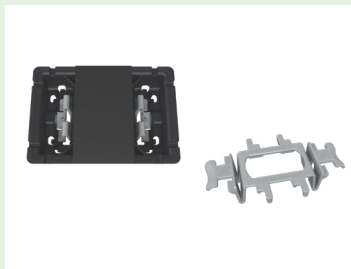


Step 1



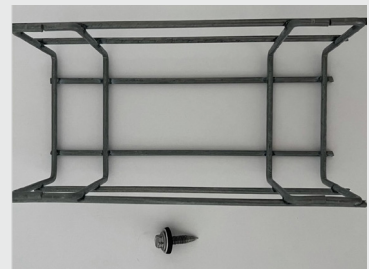
PVX Minimount PVX16032021 Ø6,3mm 36
x PVX Minimount 36 x Mesh tray clip

Step 2



PVX Minimount bottom, EPDM rubber,
mesh tray clip

Step 3



Required: screw + metal washer
including EPDM, bolt, mesh tray
60 - 200mm wide

Step 4



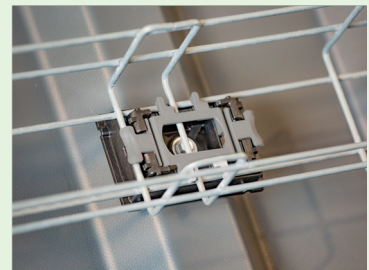
Install the PVX Minimount with the
screw, metal washer + EPDM on the
substrate with a maximum tightening
torque of: 4NM.

Step 5

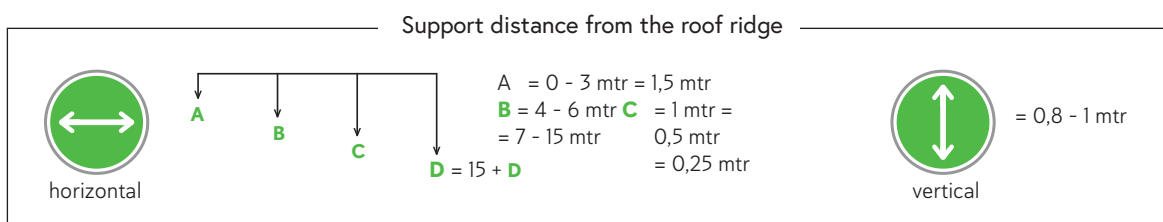


Tilt the mesh tray and place it in the PVX
Minimount. The multilock system allows
the wire tray to hang securely for
hands-free assembly.

Step 6



Place the mesh tray clip and push it on:
Click!





PVX Multimount®
THE NEW STANDARD IN CABLE MANAGEMENT

PVX Multimount® is active in the following countries:



We distribute our mounting systems through our network of distributors.
Visit <https://pvxmultimount.com/en/dealers/> for more information.

